



89

1
Notre-Dame Cathedral

Notre-Dame de Reims is one of Europe's most important Gothic structures. This masterpiece of the 13th century boasts an exceptional statuary ("The Smiling Angel"). The baptism of king of the Franks Clovis in 498 explains the choice of Notre-Dame as the coronation cathedral for 25 kings.

Open all the days from 7.30 am to 7.30 pm (except during services). To visit the upper parts : apply to Palace of Tau.

www.cathedrale-reims.com

2
Palace of Tau

Transformed at the end of the 17th century, the former palace of the archbishops of Reims still holds rooms that have retained their medieval aspect. The museum displays statuary and tapestries from the cathedral, together with objects associated with the coronation of the French kings.

Open 9.30 am-6.30 pm from 6 May to 8 Sept; 9.30 am-12.30 pm and 2-5.30 pm from 9 Sept to 5 May. Closed Mondays and 1 Jan, 1 May, 1 and 11 Nov and 25 Dec.

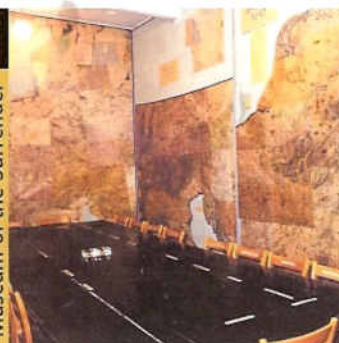
Place du Cardinal Luçon - Tel: 33 (0)3 26 47 81 79
<http://palais-tau.monuments-nationaux.fr>

Welcome
to REIMS**Coronation city,
city of champagne...**

Reims can't wait to show you its glorious historical heritage and immerse you in the prestigious universe of the most famous and the most festive of wines.

Three UNESCO World Heritage Sites, a city centre imbued with both the elegance of its Art déco facades and the laid-back atmosphere which reigns in the streets and on the café terraces, a rich, varied events calendar, a verdant natural environment...

Reims welcomes you with open arms!

5
Museum of the Surrender

The unconditional surrender of the German army was signed in a room of General Eisenhower's headquarters on 7 May 1945. This room is still intact today and a museum has been created in order to allow visitors to follow the major developments of World War II.

Open from 10 am to noon and from 2 to 6 pm. Closed Tuesdays and 1 Jan, 1 May, 14 Jul, 1 and 11 Nov and 24, 25 and 31 Dec. Free entry the first Sunday of each month.

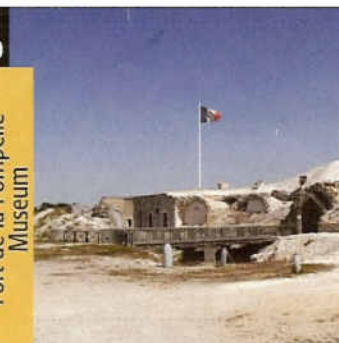
12, rue Franklin Roosevelt - Tel: 33 (0)3 26 47 84 19

6
"Foujita" Chapel

After his conversion to Catholicism, the Japanese painter Leonard Foujita designed a Neo-Romanesque chapel in 1966. The iconographical programme of the stained-glass windows and of the 200 m² large fresco is inspired by the Christ's life, but also by a refined Japanese tradition.

Open from 2 May to 31 October from 2 to 6 pm. Closed Wednesdays and 14 July. Free entry the first Sunday of each month.

33, rue du Champ-de-Mars - Tel: 33 (0)3 26 35 36 00

10
Fort de la Pompelle

This fort was built in 1880 to defend Reims. Today a museum, it houses collections of military uniforms, weapons, canons and hats (among which the Friese collection of the Imperial German army).

From Nov to Mar from 10 am to 5 pm, from Apr to Oct from 11 am to 6 pm during the week and from 11 am to 7 pm on weekends. Closed Tuesdays and from 24 Dec to 6 Jan.

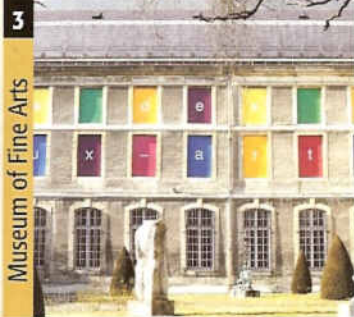
Located 8 km from Reims, on the way to Châlons-en-Champagne - Tel: 33 (0)3 26 49 11 85

11
Hôtel Le Vergeur Museum

Townhouse Le Vergeur presents for the most part a Renaissance-style architecture. Rich collection of furniture and artworks made up by Hugues Krafft at the beginning of the 20th century. Integral series of wood engravings by Albrecht Dürer.

Guided tours in French, English and German from Tuesday to Sunday at 2, 3, 4 and 5 pm. Closed on 1 May, 14 July, 1 November and from 24 December to 3 January 2011. Reservations required for groups.

36, place du Forum - Tel: 33 (0)3 26 47 20 75
www.museelevator.com

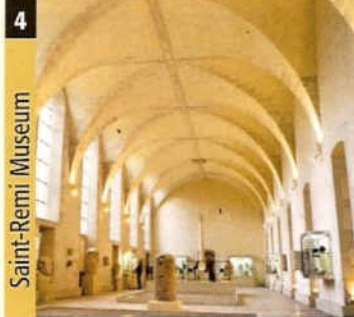


3
Museum of Fine Arts

Located in the former Saint Denis Abbey, the Museum of Fine Arts of Reims is considered one of the most important in France. Presentation of works from the 15th to the 20th centuries including 13 Cranachs' portraits, and a rich 17th and 18th collection including 26 Corot's landscapes.

Open from 10 am to noon and from 2 to 6 pm. Closed Tuesdays and 1 Jan, 1 May, 14 Jul, 1 and 11 Nov, 25 Dec. Free entry the first Sunday of each month.

8, rue Chanzy - Tel: 33 (0)3 26 35 36 00



4
Saint-Remi Museum

The museum occupies a former Benedictine abbey dating from the 17th and 18th centuries. The various rooms surrounding the cloister house important collections dedicated to local history, from prehistoric times to World War II, to Gallo-Roman archaeology and more.

Open every day, from 2 to 6.30 pm during the week and from 2 to 7 pm on weekends. Closed 1 Jan, 1 May, 14 Jul, 1 and 11 Nov, 25 Dec. Free entry the first Sunday of each month.

53, rue Simon - Tel: 33 (0)3 26 35 36 90

WWW.REIMS-TOURISME.COM
+33 (0)3 26 35 36 90
OFFICE DE TOURISME
REIMS
Champagne



7
Former Jesuit College Planetarium - FRAC

Architectural grouping dating from the 17th century, with its gardens and its vines. Planetarium. Regional Contemporary Art Funds (FRAC).

Gardens 9 am-noon and 2-6 pm (closed Saturdays and Sundays). Planetarium 2 to 6 pm Saturdays and Sundays (everyday during school holidays). FRAC 2-6 pm (closed Mondays).
Closed 1 Jan, 1 May, 14 Jul, 1 and 11 Nov and 25 Dec.

1, place Museux - Tel: 33 (0)3 26 35 34 70



8
Saint-Remi Basilica

This Romanesque-Gothic abbey church is one of the most important Romanesque realizations in the North of France. It has been built in the 11th century in order to house the holy ampulla and the relics of Saint Remi, the bishop who baptized Clovis in 498. Saint Remi's tomb (1847).

Open from 8 am until sundown (no later than 7 pm). No visitors allowed during mass.

Place du Chanoine Ladame
www.catholique-reims.ccf.fr/basilique-stremi.htm

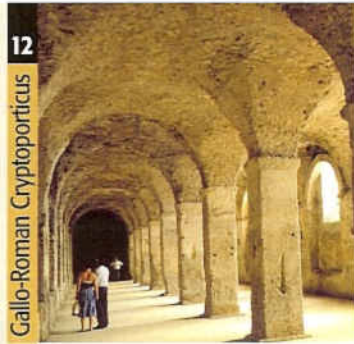


9
Reims Automobile Museum

Nearly 200 vehicles, both cars and motorcycles, from 1908 to the present day, including a Torpedo Scar manufactured in Reims. Several prestigious brands. 120 pedal cars and 5,000 miniature cars.

Open from 10 am to noon and from 2 to 6 pm (Apr to Oct) or 5 pm (Nov to Mar). Closed Tue (except Jul-Aug), 25 Dec and from 28 Dec to 15 Jan.

84, av. Georges Clemenceau - Tel: 33 (0)3 26 82 83 84
www.musee-automobile-reims-champagne.fr

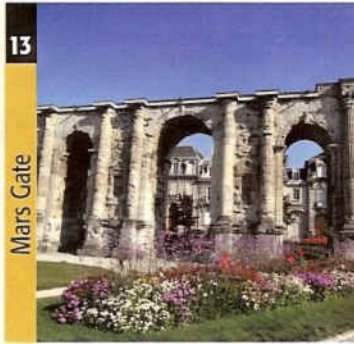


12
Gallo-Roman Cryptoporticus

Built circa 200 A.D., these partially buried galleries located beneath the Gallo-Roman forum of Durocororum were once used to store grain. Only the eastern gallery has remained, but it is among the few cryptoporticus of the Roman world to have been excavated. Temporary exhibitions.

Open every day from 1 June to 30 September from 2 to 6 pm. Free entry.

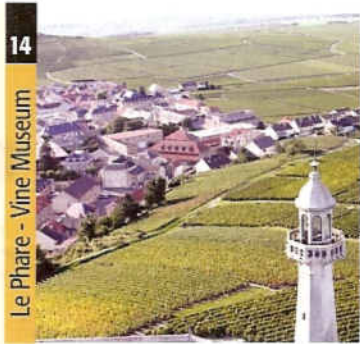
Place du Forum - Tel: 33 (0)3 26 77 75 28



13
Mars Gate

Mars Gate is the only remaining monumental gate built in the first part of the 3rd century and giving access to the Roman city of Durocororum. It is 33 metres long and the rich mythological decoration of its three arches, that are edged with Corinthian columns, is still partly visible.

Place de la République



14
Le Phare - Vine Museum

Overlooking the sloping vineyards of the Montagne de Reims, the Lighthouse and its Vine Museum let the visitors discover the fascinating world of Champagne, thanks to a modern museography. Views on the vineyards from the top.

Open from 12 March to 31 Dec from 10 am to 5 pm (5.30 pm on weekends and bank holidays). Closed Mondays and 25 Dec.

Verzenay, 17 km from Reims - Tel: 33 (0)3 26 07 87 87
www.lepharedeverzenay.com